

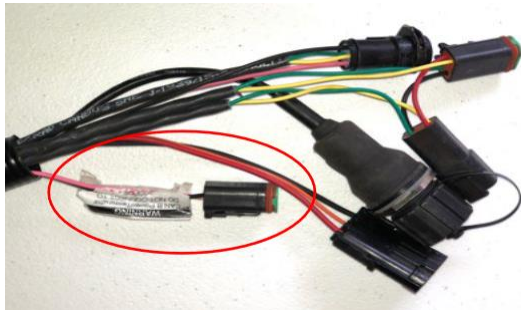


1. Use 3 screws supplied with kit and attach Beacon 4 to tapered part of bracket. Don't overtighten.
2. Use supplied alcohol swabs to clean a small section of the tractor roof.
3. Peel back the mounting plate adhesive strips and press onto roof.
4. The bracket will then magnetically mount to base plate.

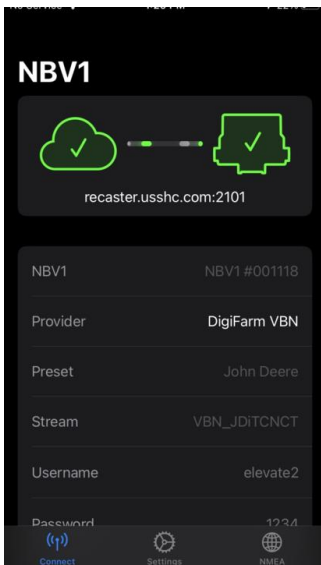
Note: Beacon 4 must be mounted vertical if outside



- 1 Begin by connecting Beacon and adapter to the **Port A** connection on the ParaDyme or GeoSteer cabling



- 2 Connect the Power Tee to the Can B power / Terminator connection on the Display cable



GR Tech NBV1 NTRIP Client
Navigation

OPEN

- 2 Pair your Beacon 4.0 with the **GR Tech NBV1 NTRIP Client** iOS App. Once paired your iPad will ask to download directly from the Apple App Store.

See our App QRC for set-up details.

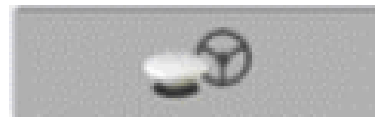




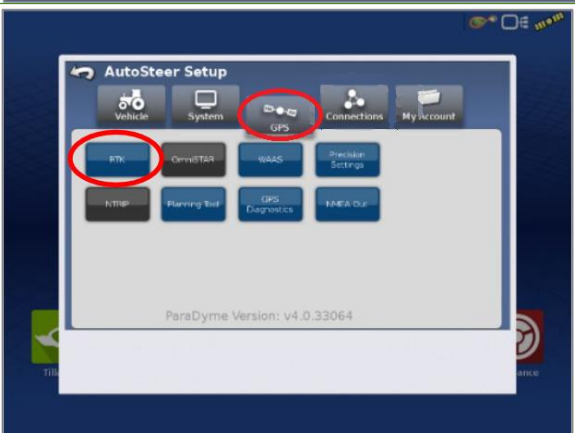
4 Enter the Setup menu by tapping the wrench icon



5 Enter the GPS/Guidance Setup menu by pressing the receiver and wheel icon at the bottom

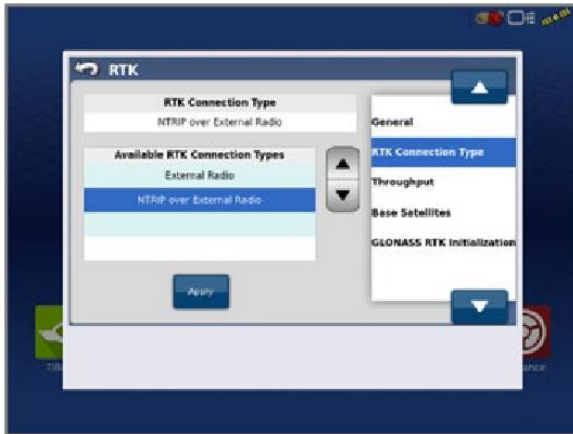


6 Select the wrench icon next to Steering option selection



7 Next select the **GPS tab** at the top, then the **RTK** icon

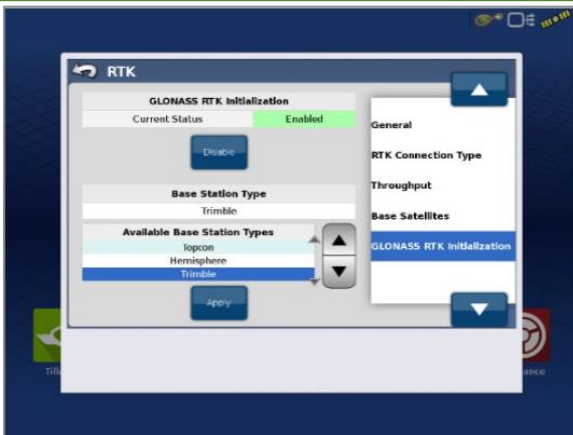




8 Select **RTK Connection Type** on the right

Select **NTRIP over External Radio**

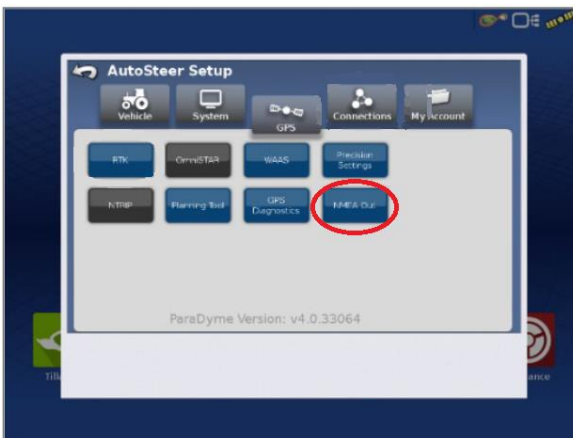
Select **Apply**



9 Select **GLONASS RTK Initialization** on the right (If **GLONASS does not appear, skip to step 10**) & Enable it

Make sure the Base Station Type is set to **Trimble**

Select **Apply**



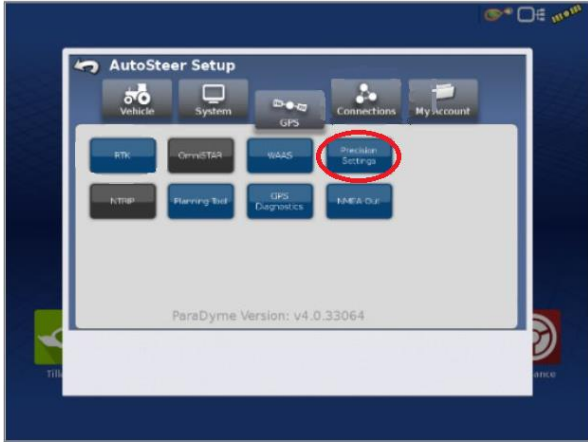
10 Back out to the AutoSteer Setup page and select the **NMEA Out** icon



11 **Port A Messages** should be adjusted so that all NMEA messages are off except **GGA (Current)** at **0.1 Hz**

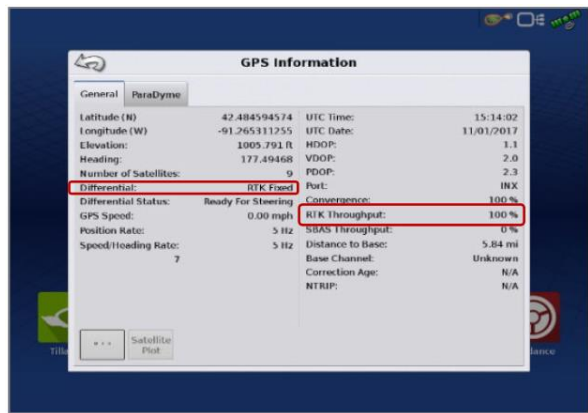
Under **Port A Configuration**, Baud Rate should be **38400**





- 12 Back out to the AutoSteer Setup page and select the **Precision Settings** icon

Set to **RTK ONLY**



- 13 Return to the run screen & confirm you have throughput and RTK fix