



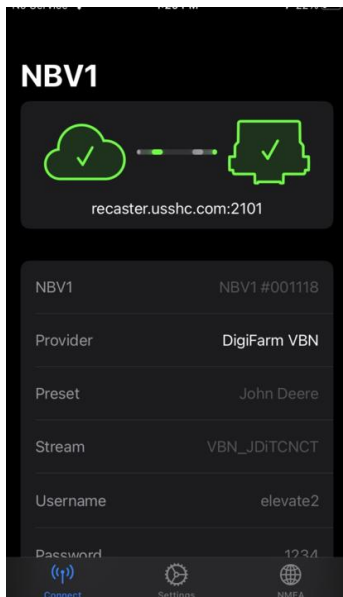
1. Use 3 screws supplied with kit and attach Beacon 4 to tapered part of bracket. Don't overtighten.
2. Use supplied alcohol swabs to clean a small section of the tractor roof.
3. Peel back the mounting plate adhesive strips and press onto roof.
4. The bracket will then magnetically mount to base plate.

**Note: Beacon 4 must be mounted vertical if outside**



- 1 Install the Beacon into the EXP-100 port expander cable

Ensure cord is firmly attached and pins are clean of debris



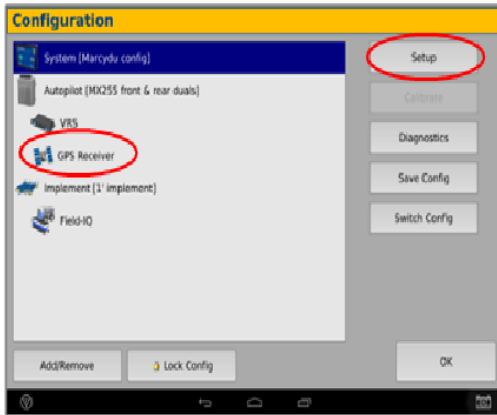
GR Tech NBV1 NTRIP Client  
Navigation

OPEN

- 2 Pair your Beacon 4.0 with the **GR Tech NBV1 NTRIP Client** iOS App. Once paired your iPad will ask to download directly from the Apple App Store.

See our App QRC for set-up details.

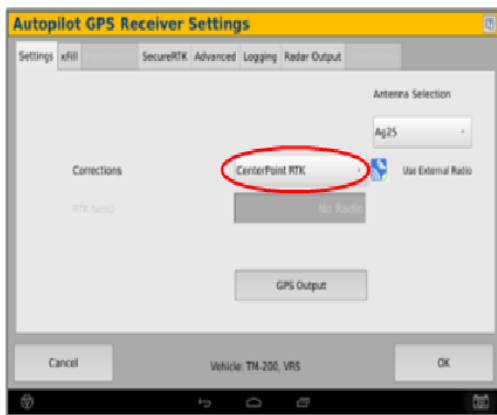




3

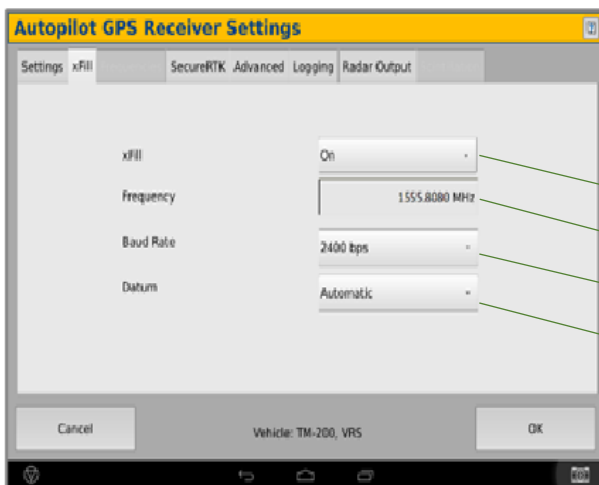
From the Home screen > **Wrench icon** to reach Configuration > **GPS Receiver** (left side, satellite icon) > **Setup** (top right)

(default password 2009 if needed)



4

On the GPS Receiver Settings page change the Corrections to **CenterPoint RTK**



5

Select **xFill** tab at the top and verify the settings below

→ **xFill = On**

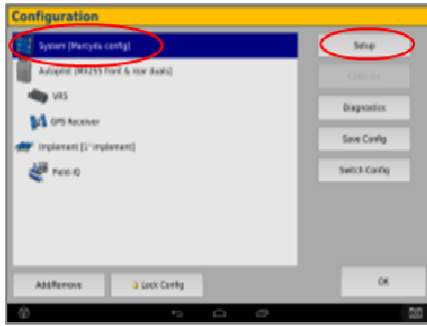
→ **Frequency = 1555.8080 MHz**

→ **Baud Rate = 2400 bps**

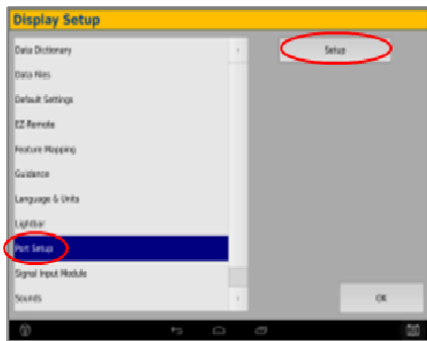
→ **Datum = Automatic**

select **OK** to confirm.





- 6 From the Configuration page, select **System** (left side) and then **Setup** (top right)

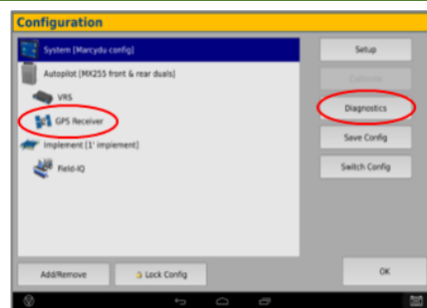


- 7 Scroll down and select **Port Setup** > **Setup**



- 8 From the **AG 815 Secondary Serial** dropdown select the **EXP-100** serial #

Press **OK** to confirm



- 9 Check settings in Ag Remote:

From the Configuration page select **GPS receiver** (left side, satellite icon) and then **Diagnostics** (right side)



- 10 Select **Ag Remote**





CFG	I	RTCM	38k4
8N1	O	None	38k4

11

Ag Remote Setup instructions:

Right arrow twice to Configuration >  
Down arrow to Configuration menu >  
Right arrow to **Port D** config > Down  
arrow to Enter

Confirm if settings are the same as  
image.

If not:

Right arrow once to select Input type  
[TSIP is default] & Up arrow to change  
to **RTCM**

Confirm Baud rate for input is set to  
**38k4**

Right arrow 5x to the Output type [TSIP  
is default] & Up arrow to change to  
**NONE**

Confirm Baud rate for output is set to  
**38k4**

Press **Enter** (confirm settings according  
to image) > Esc icon 3x to return to the  
main screen

Confirm RTK (with **capital R**) in top left