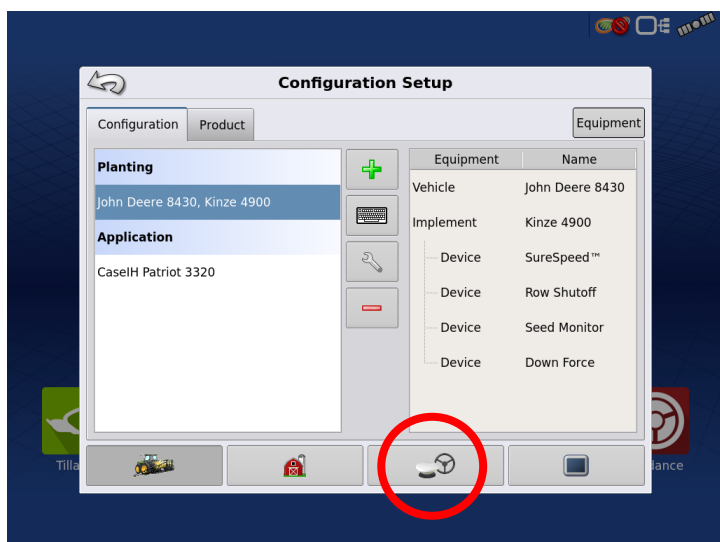
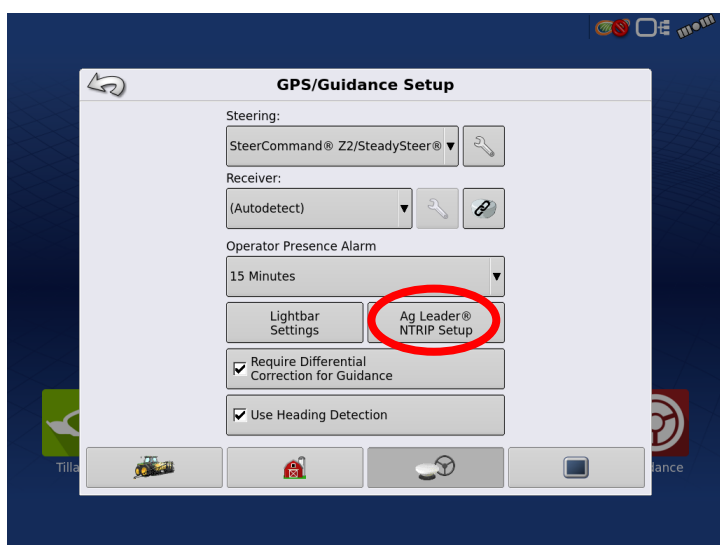


1 From the run screen select the wrench icon 'Setup'

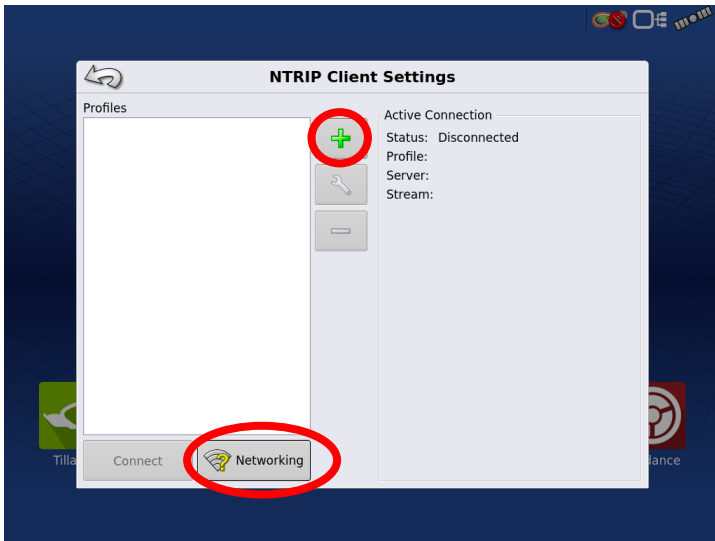


2 Select the Receiver icon



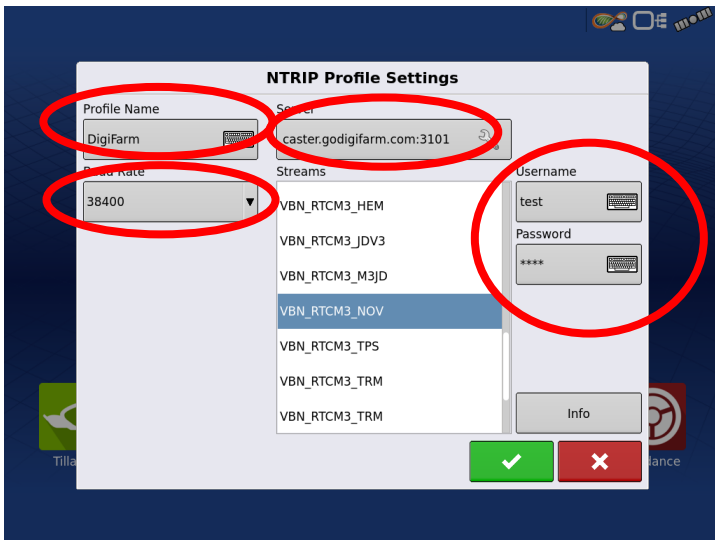
3 From the GPS/Guidance Set Up screen, select 'Ag Leader NTRIP Setup'





4 Select the 'Network' option and confirm internet connection.

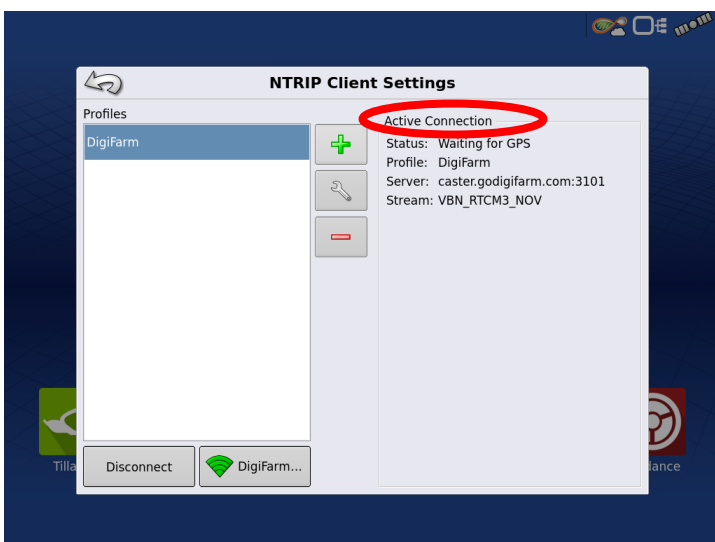
5 Select the '+' icon to create a new profile



6 Confirm the following information:

- Profile- **DigiFarm**
- Server- **caster.godigifarm.com** or **208.68.167.162**
- Baud Rate- **38400**
- Stream-**VBN_RTCM3_NOV**
- Username/Password- **Customers DigiFarm User/Pass**

7 Select the Green Checkmark to save the profile.



8 Confirm the profile says 'Active Connection'





9

Confirm RTK fix by returning to the home screen and confirming the satellite has gone green