

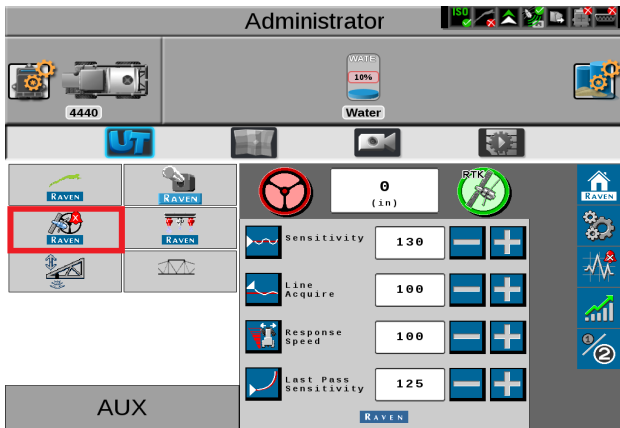
- 1 Install the RS1 adapter between the factory cabling and the RS1, Then connect the Elevate cable to the RS1 adapter.



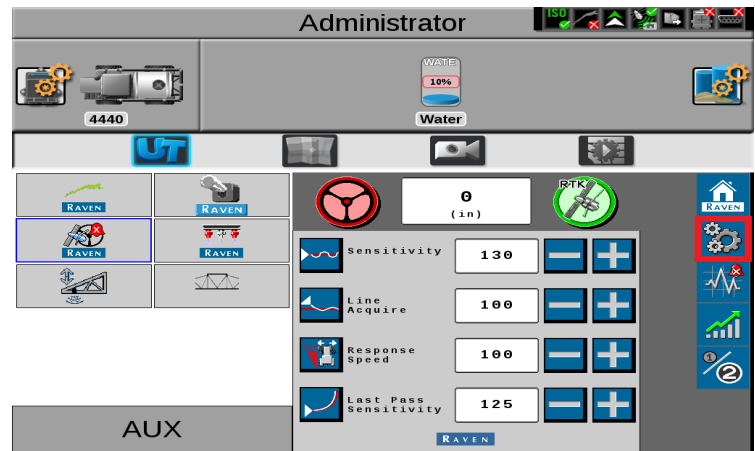
- 2 **Note:** Placement of the elevate modem on the cab roof is vitally important to performance. User must extend the entire length of the cable away from the receiver as shown below.



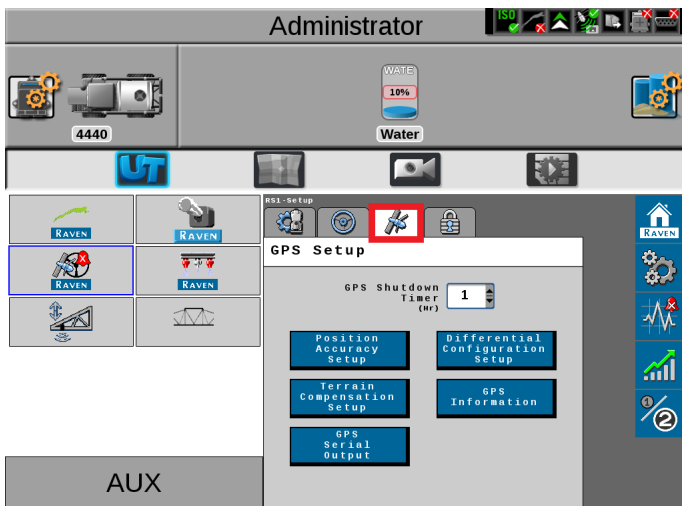
- 3 Once the display is on and the UT has found all the ISOBUS components select the RS1 Icon.



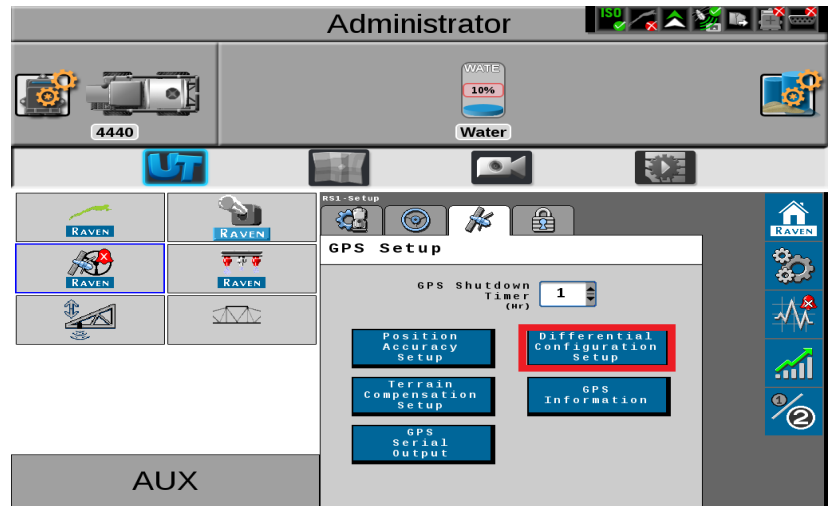
- 4 Select the setup icon.



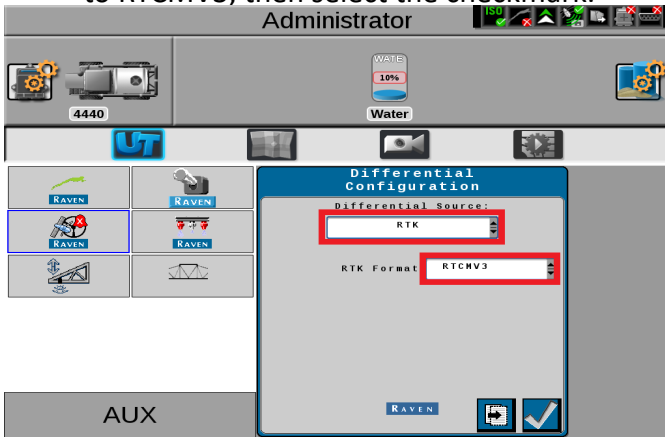
- 5 Select the GPS setup icon



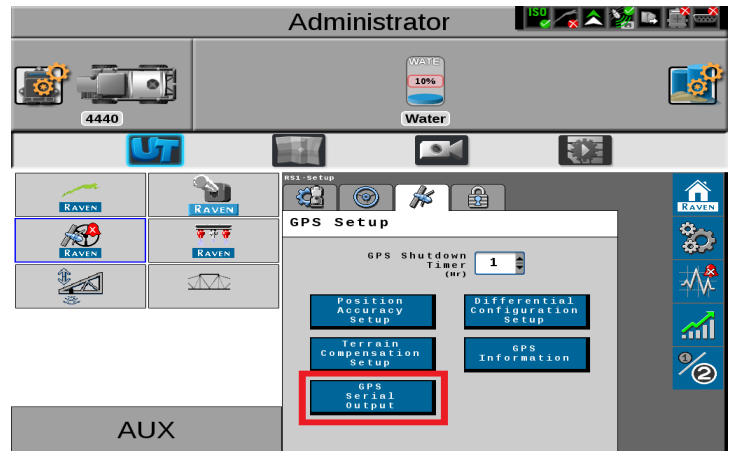
- 6 Select Differential Configuration setup



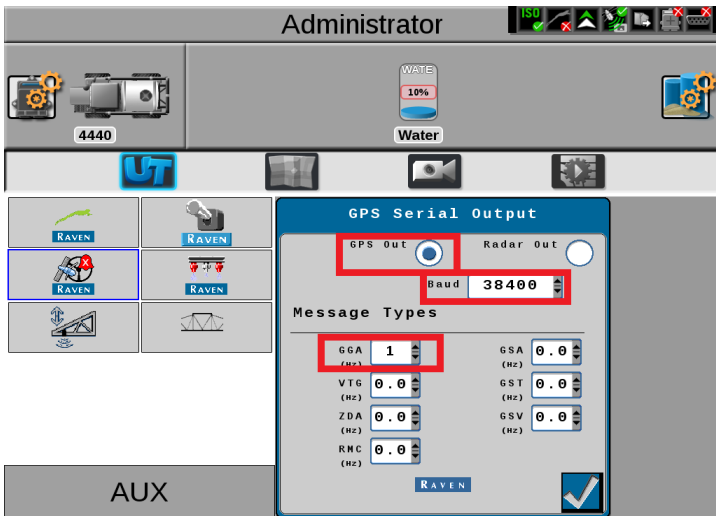
7 Set Differential source to RTK and RTK Format to RTCMV3, then select the checkmark.



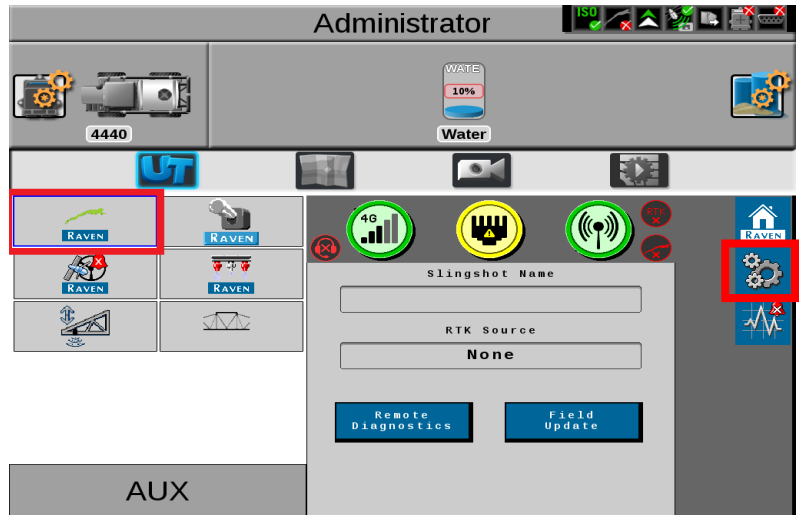
8 Select GPS serial output



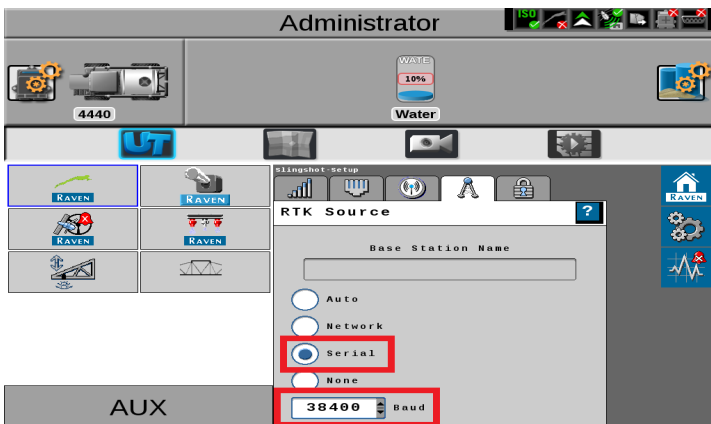
9 Select GPS out, Set Baud to 38400, ensure GGA is at 1 and all others are at 0.0, select the checkmark



10 Select slingshot from the UT, Then select the setup icon to the right.



11 Select RTK Source and set to serial and 38400 Baud



12 Return to the RS1 UT screen and confirm RTK

