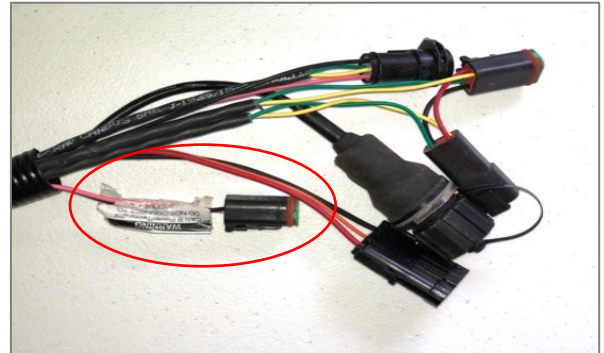


- 1 Begin by connecting Elevate and adapter to the Port A connection on the ParaDyme or GeoSteer cabling




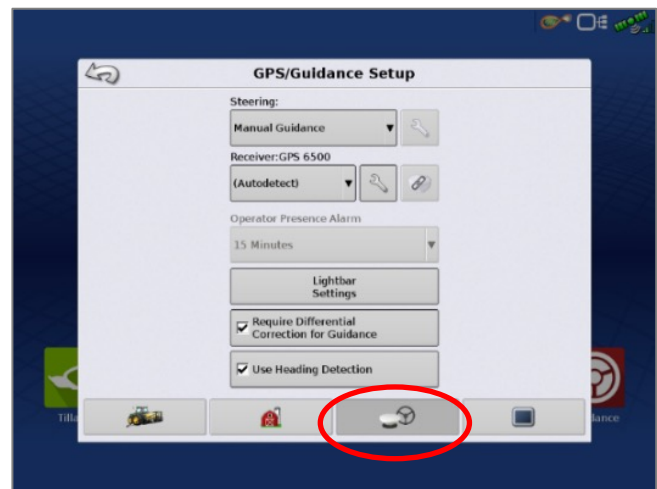
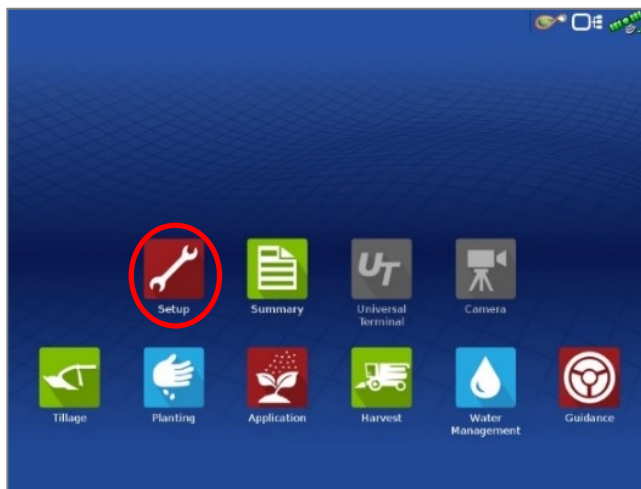
- 2 Connect the Power Tee to the Can B power/Terminator connection on the Display cable



- 3 **Note:** Placement of the elevate modem on the cab roof is vitally important to performance. User must extend the entire length of the cable away from the receiver as shown below.



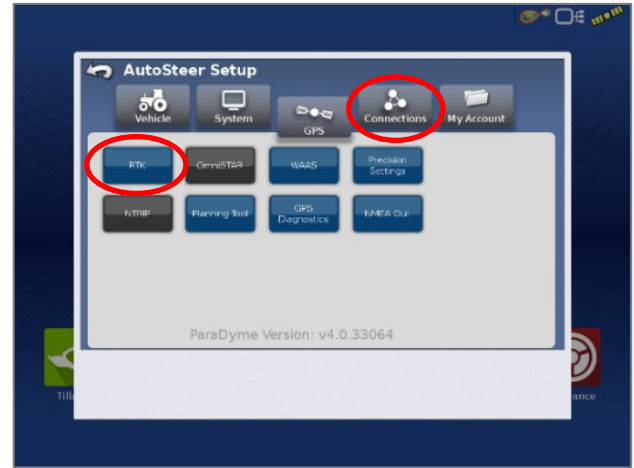
- 5 Tap the Setup wrench icon, then the  icon



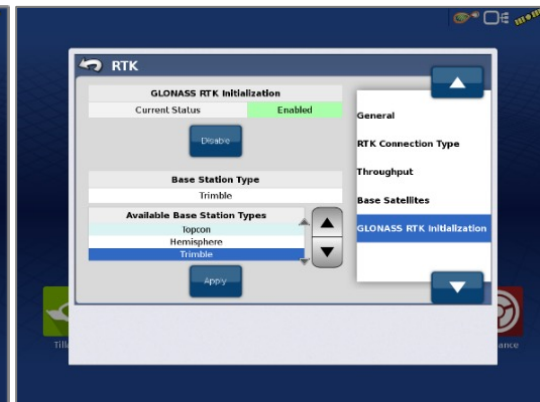
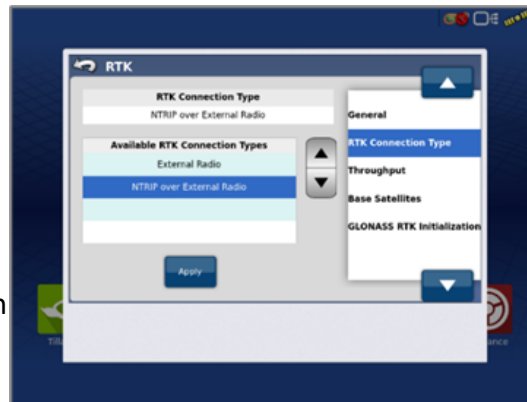
6 From the GPS/Guidance setup screen, select the wrench next to ParaDyme/GeoSteer



7 Next select the GPS tab, then the RTK icon

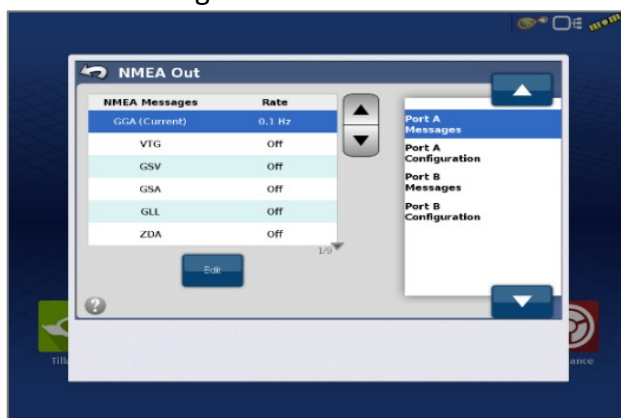


- 8
- Select Connection type, select NTRIP over External Radio, select apply
 - Select GLONASS RTK Initialization on the right & enable it
 - Make sure the Base Station Type is set to Trimble
 - * if GLONASS does not appear, skip to the next step



9 Back out of this screen & select the NMEA Out icon

- Port A messages should match the screenshot below (all messages off except GGA current at 1 hz)
- Port A Config> Baud rate should be 38400



10 Back out of this screen, Select Precision settings & set to "RTK ONLY"

Return to the run screen & confirm you have throughput & RTK fix

