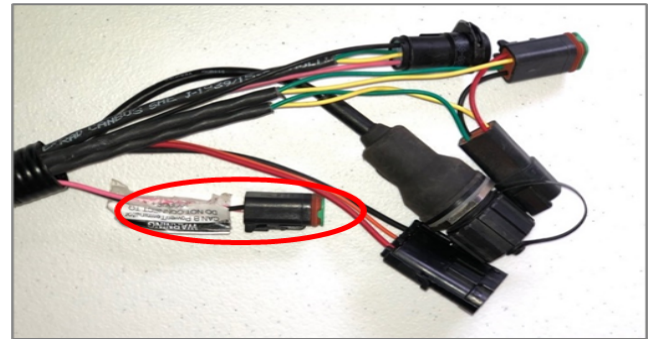



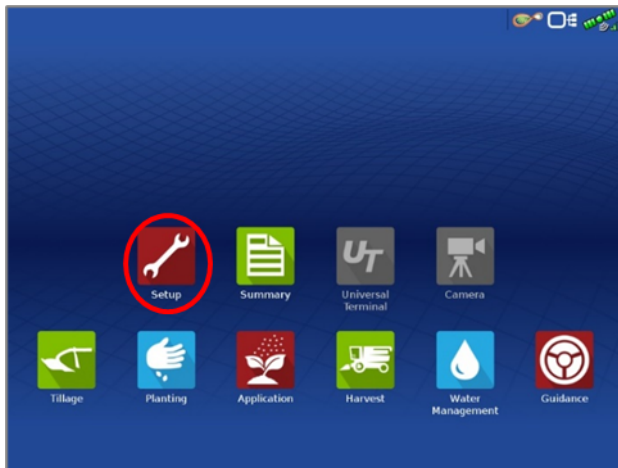
1

Begin by connecting the Beacon and adapter to the Port A connection on the ParaDyme or GeoSteer cabling
Connect the Power Tee to the Can B power/Terminator connection on the Display cable
Note: A null modem cable from your DigiFarm modem kit is needed for all modems, but not for Beacons.



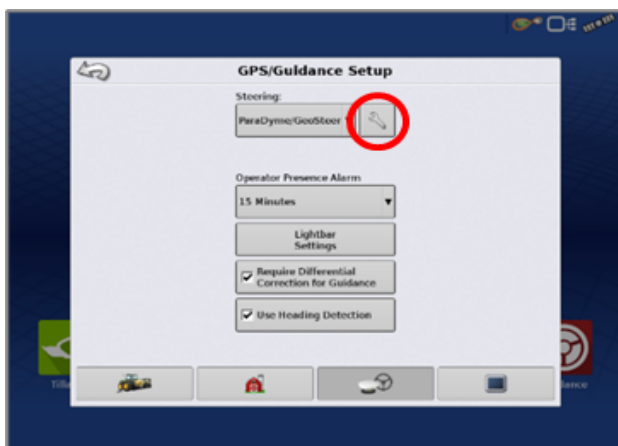
2

Tap the Setup wrench icon, then the  icon



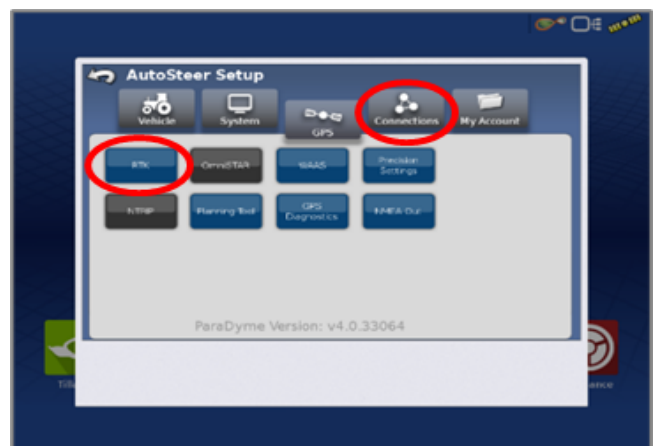
3

From the GPS/Guidance setup screen, select the wrench next to ParaDyme/GeoSteer

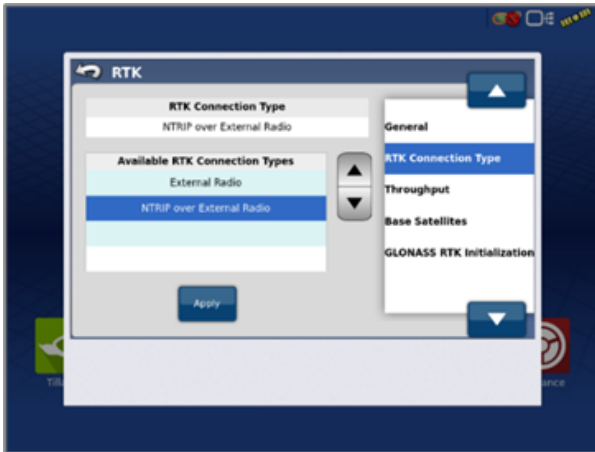


4

Next select the GPS tab, then the RTK icon



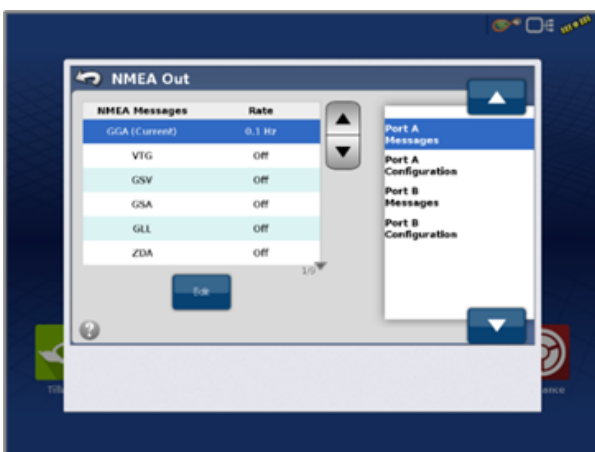
- 5 Select the Connection type on the right & ensure it's set to NTRIP over External Radio



- 6 Select GLONASS RTK Initialization on the right & enable it. Make sure the Base Station Type is set to Trimble
* if GLONASS does not appear, skip to the next step



- 7 Back out of this screen & select the NMEA Out icon
 - Port A messages should match the screenshot below
 - Port A Config> set Baud Rate to 38400



- 8 Back out of this screen, select precision settings & set to "RTK Only"
Return to the run screen & confirm you have throughput & RTK fix

