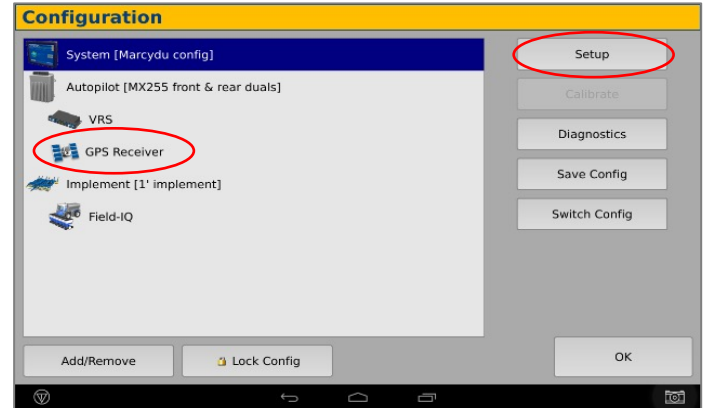




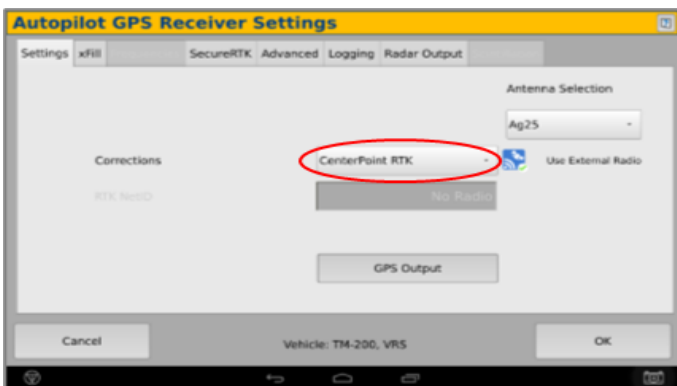
- 1 Install the RV50 Cable into Port D of the Receiver



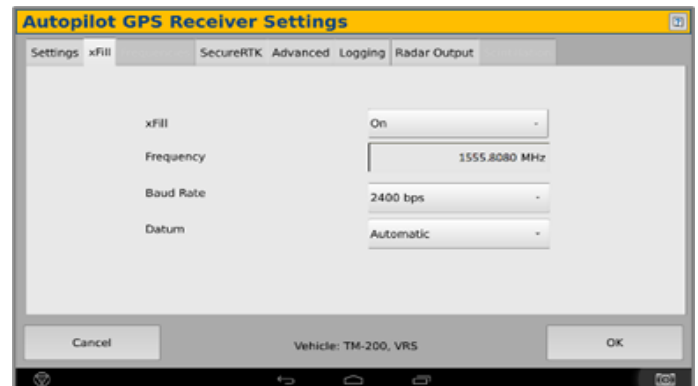
- 2 Select the Wrench icon > GPS Receiver > Setup (Password 2009 if needed)



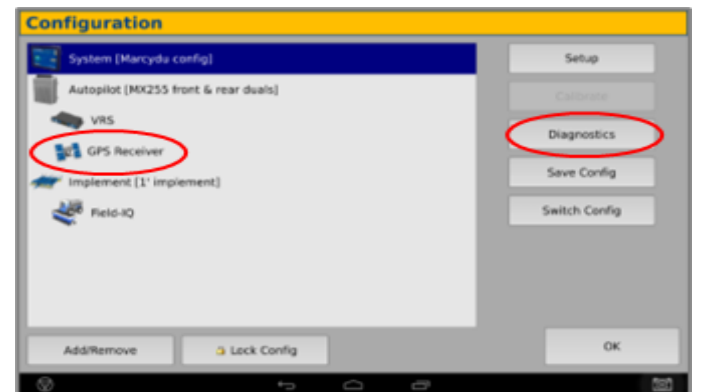
- 3 On the GPS Receiver setup page change the Corrections to CenterPoint RTK



- 4 Select xFill tab > verify settings according to screenshot below

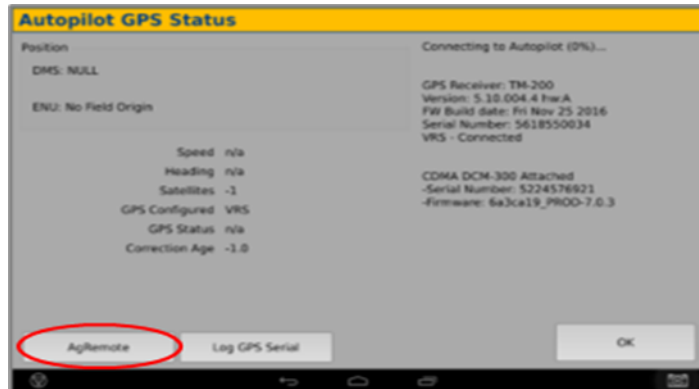


- 5 Return to the Configuration page & select GPS receiver and Diagnostics





6 Select Ag Remote



7 Ag Remote Setup instructions

Right arrow twice to Configuration> Down arrow to Configuration menu> Right arrow to Port D config> Down arrow to Enter

Right arrow once to select TSIP & Up arrow to change TSIP to RTCM

*Confirm Baud rate is set to 38k4> Right arrow 5x to the Bottom TSIP & Up arrow to change to NONE

Press Enter (confirm settings according to screenshot)> Esc icon 3x to return to the main screen

Confirm RTK (with capital R) in top left and A:####

