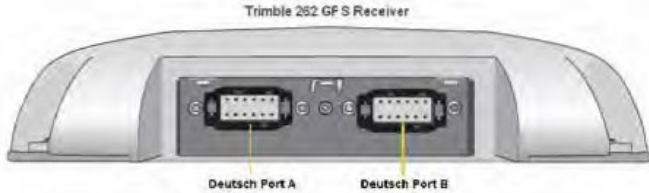
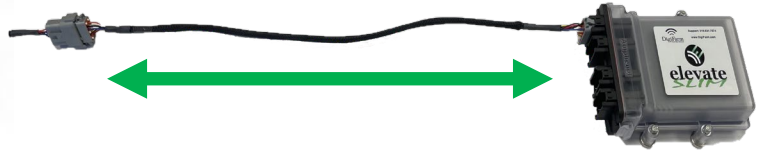


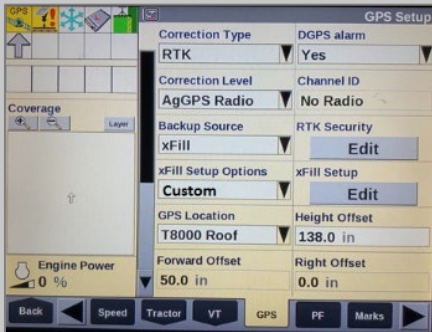
- 1 Connect the Elevate cable to Port B on the receiver



- 2 **Note:** Placement of the elevate modem on the cab roof is vitally important to performance. User must extend the entire length of the cable away from the receiver as shown below.



- 3 From the Run screen select back>Toolbox>GPS Tab



- 4 On the GPS setup screen, Set the correction type to RTK, Corrections level to AGGPS Radio. Enable the the backup source to xFill, set xFill options to custom>select xFill Setup Edit.

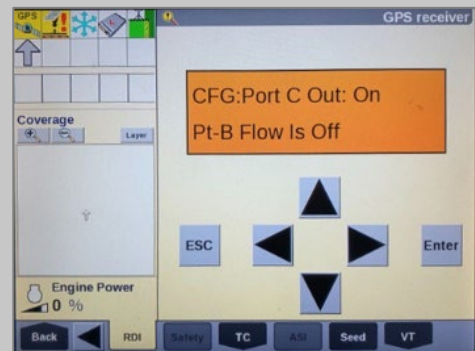
Set the custom fields to match the screen to the right



- 5 From the run screen select Back>Diagnostics> Scroll to the RDI tab



- 6 Program Port C of the receiver on the RDI screen: Right arrow twice to configuration>Down arrow to Config menu>Right arrow to Port C config>Down arrow to enter> Verify Port C Flow is on & Port B flow is off> Down arrow once to next screen.



- 7 Right arrow once to select TSIP>Down arrow to RTCM (CMR for 252/262)>Confirm Baud rate is set to 38K.4> right arrow 5 times to the bottom TSIP>Down arrow to change this to NMEA>Enter (confirm setting with screenshot to the right)



- 8 Down arrow once to NMEA1 screen>Confirm GGA is the only one capitalized. (if others are capitalized right arrow to select it and down arrow to make them lower case) Select Enter



- 9 Down arrow to NMEA2>Confirm everything is lower case> Repeat step 8 to make sure everything is lower case on NMEA2 if needed>Enter>Esc 3 times



- 10 Confirm RTK (with a capital R) in the top left-hand corner as well as an A:#### in the bottom right. (This can also be confirmed by noticing DGPS in the upper left hand of the full screen)

