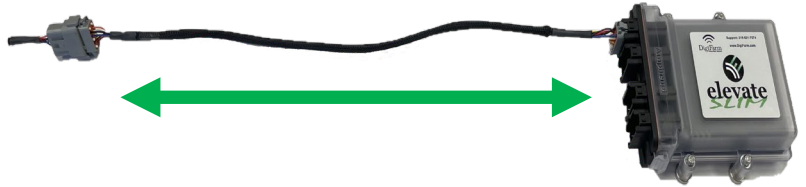


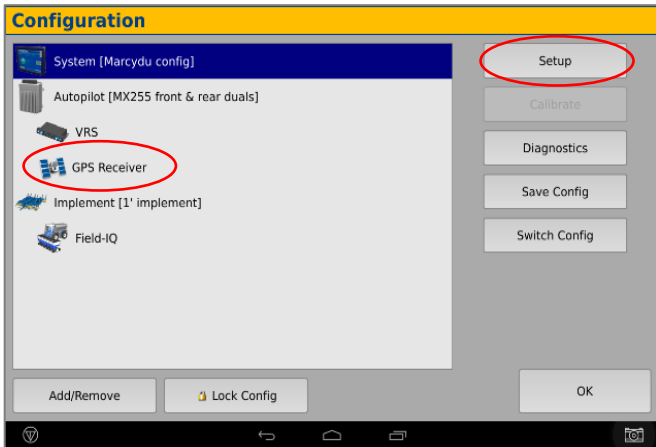
- 1 Install the Elevate Cable into the EXP-100 port expander cable



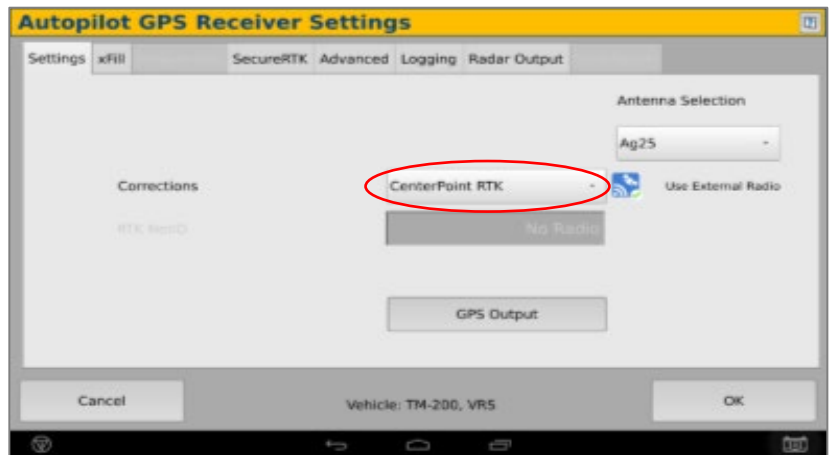
- 2 **Note:** Placement of the elevate modem on the cab roof is vitally important to performance. User must extend the entire length of the cable away from the receiver as shown below.



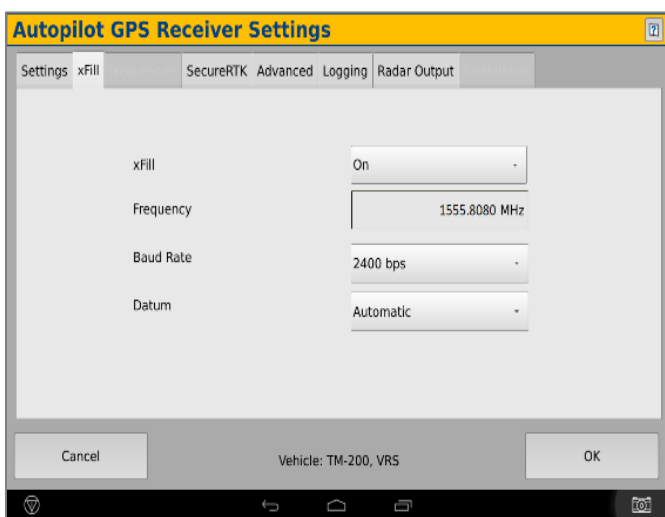
- 3 Select the Wrench icon > GPS Receiver > Setup



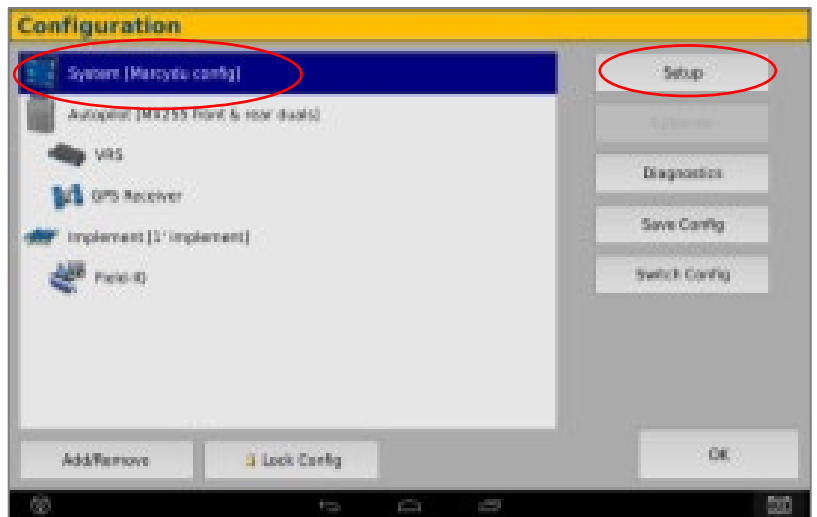
- 4 On the GPS setup page change the Corrections to Centerpoint RTK



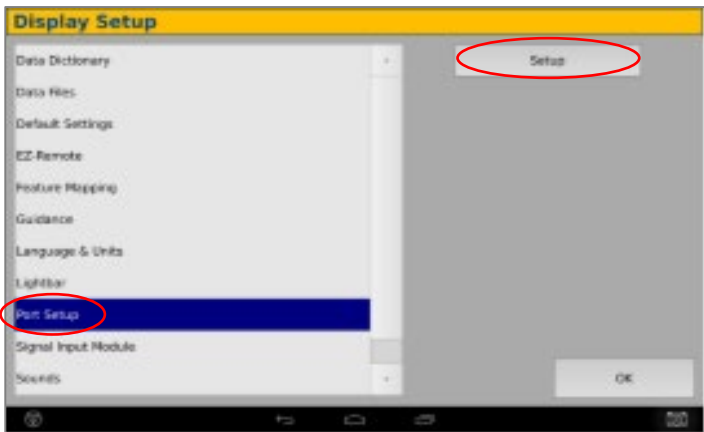
- 5 Select the xFill tab and confirm settings according to the below screenshot



- 6 Select OK to return to Configuration page & select System > Setup



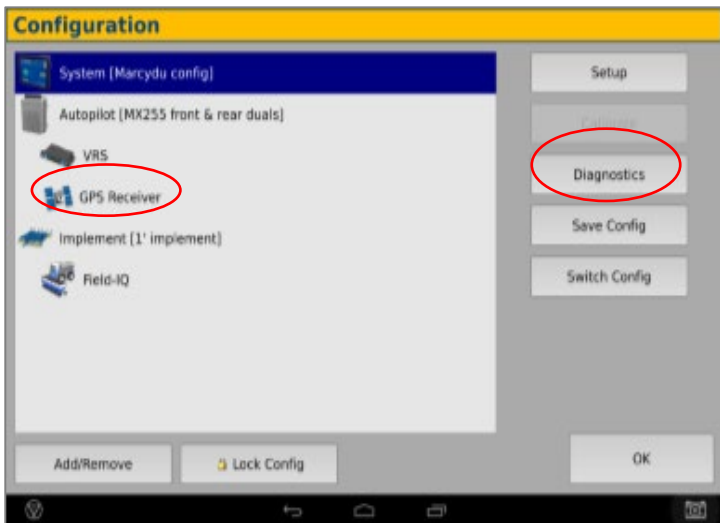
7 Scroll down & select Port setup> Setup



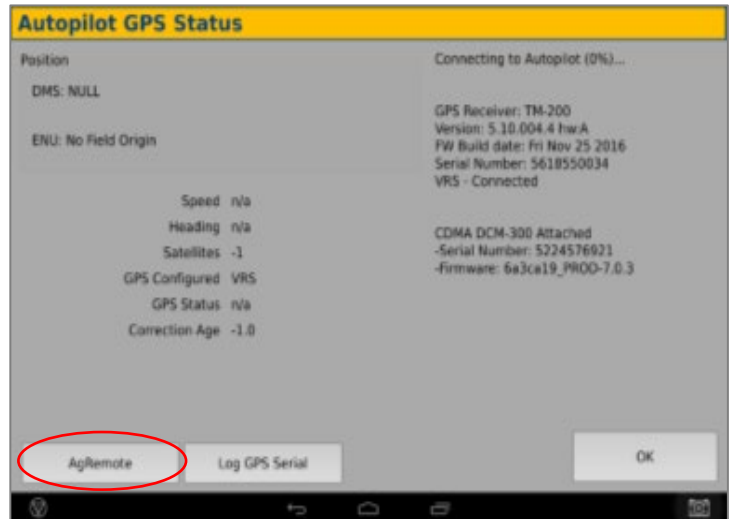
8 Select the EXP-100 serial # from the AG 815 Secondary Serial dropdown



9 Return to the Configuration page & select GPS receiver and Diagnostics (password 2009)



10 Select Ag Remote



Ag Remote setup:

Right arrow twice to Configuration> Down arrow to Configuration menu> Right arrow to Port D config> Down arrow to Enter

Right arrow once to select TSIP & Up arrow to change TSIP to RTCM

*Confirm Baud rate is set to 38k4> Right arrow 5x to the Bottom TSIP & Up arrow to change to NONE

Press Enter (confirm settings according to screenshot)> Esc icon 3x to return to the main screen

Open a Field to Confirm RTK

