

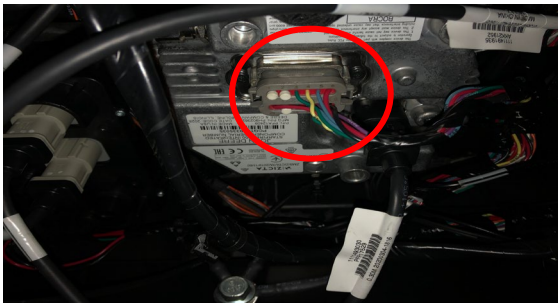
- 1 Grab plastic bezel with both hands & pull directly toward you to remove.



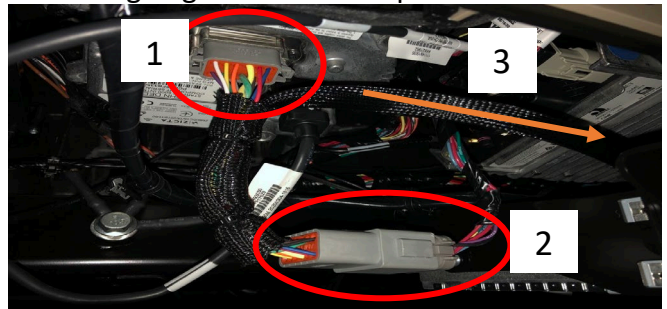
- 2 Use Torx 30 to remove (4) screws. Pull out the entire insert.



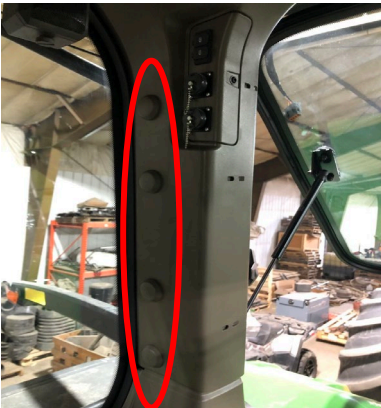
- 3 Unplug the factory antenna connector.



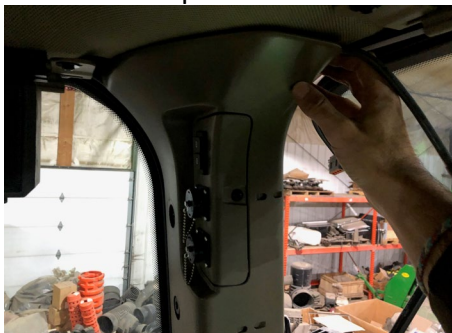
- 4 1). Plug "T" Cable here. 2). Plug original JD cable here. 3). 47" end going back toward B post.



- 5 Unscrew the (4) hand screws.



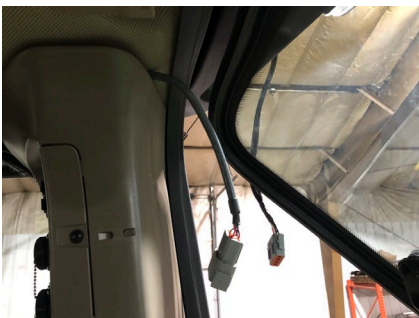
- 6 Gently pull from the top corner to remove back right corner plastic cover.



- 7 Grab the other end of the "T" cable as shown.



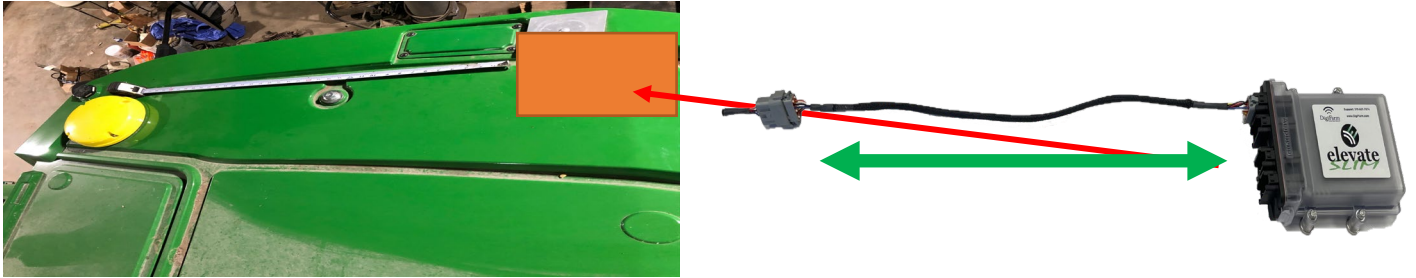
- 7 Re-attach corner plastic with cable routed as shown.



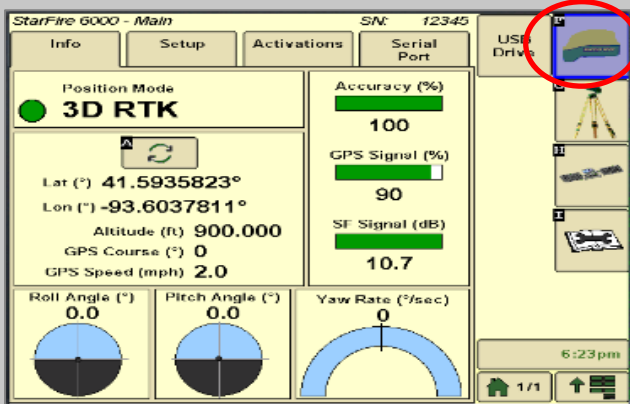
- 8 Reinstall (4) hand screws.



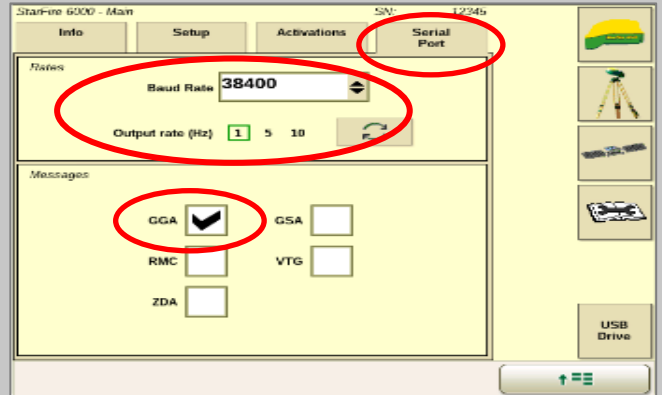
- 9 **Note:** Placement of the elevate modem on the cab roof is vitally important to performance. User must extend the entire length of the cable away from the receiver as shown below.



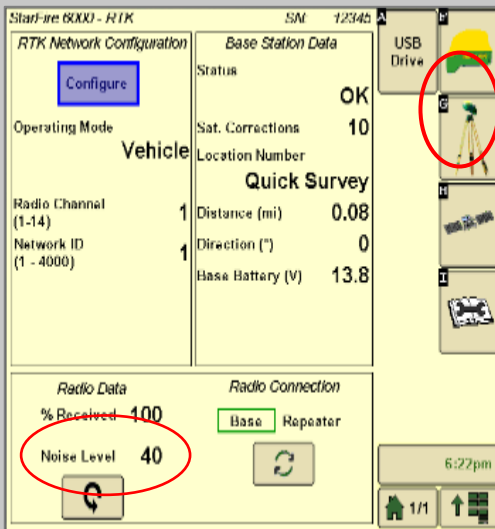
- 10 Go to the Starfire Main settings page & select the GPS Receiver icon in the Top right corner (F).



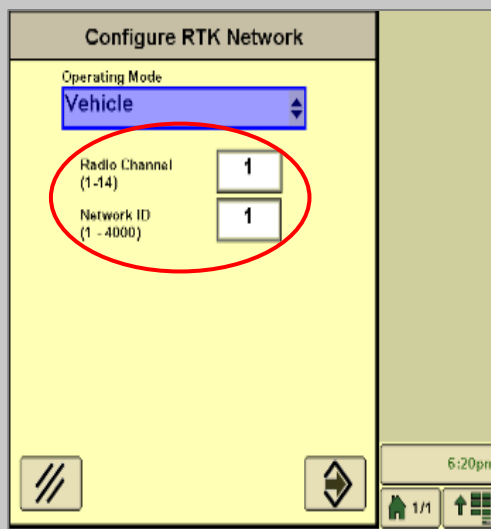
- 11 Go to the serial port page & confirm: Baud Rate is 38400, Output rate at 1Hz & GGA box check marked.



- 12 Set Noise Level to 0. Continue to the RTK setup page (G).



- 13 Set the Radio Channel & Network ID both to 1.



- 14 Confirm RTK fix.

