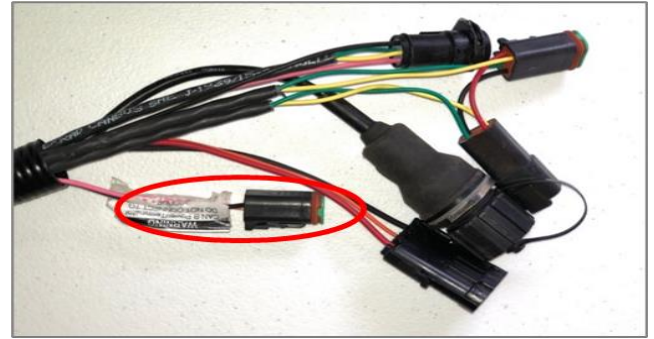


Cable Installation

1. Begin by connecting the Beacon and adapter to the Port A connection on the ParaDyme or GeoSteer cabling. Connect the Power Tee to the Can B power/Terminator connection on the Display cable.



Mounting

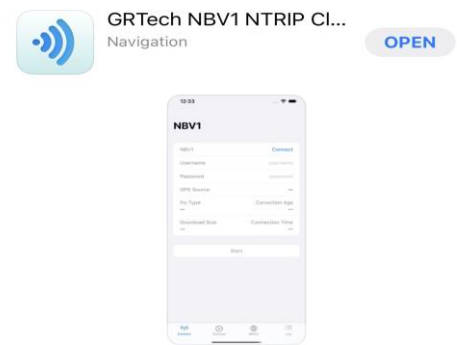
1. Use 3 screws supplied with kit and attach Beacon 4 to tapered part of bracket. Don't overtighten.
2. Use supplied alcohol swabs to clean a small section of the tractor roof.
3. Peel back the mounting plate adhesive strips and press onto roof.
4. The bracket will then magnetically mount to base plate.




Note: Beacon 4 must be mounted vertical.

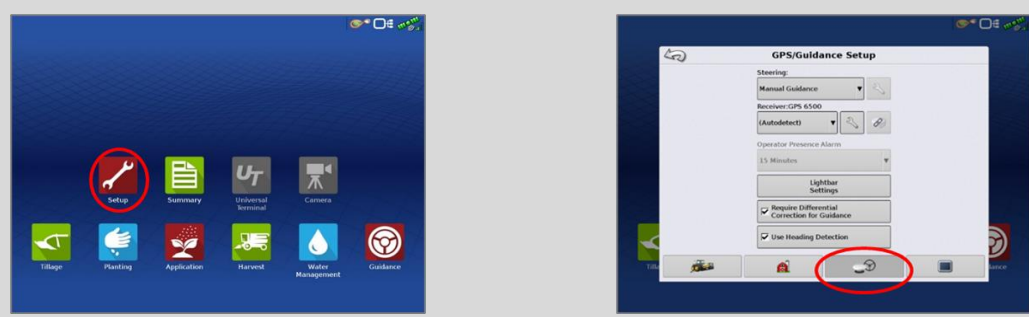
iOS App

2. Pair your Beacon 4.0 with the GR Tech NBV1 NTRIP Client iOS App. Once paired your iPad will ask to download directly from the Apple App Store. See our App QRC for set-up details.



Receiver Set-up

3. Tap the Setup wrench icon, then the  icon



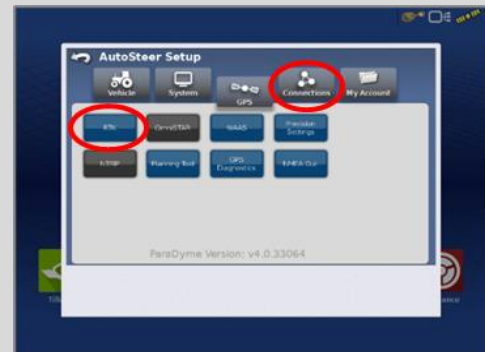
4

From the GPS/Guidance setup screen, select the wrench next to ParaDyme/GeoSteer



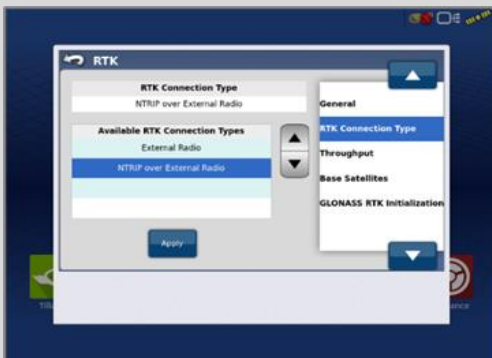
5

Next select the GPS tab, then the RTK icon



6

Select the Connection type on the right & ensure it's set to NTRIP over External Radio



7

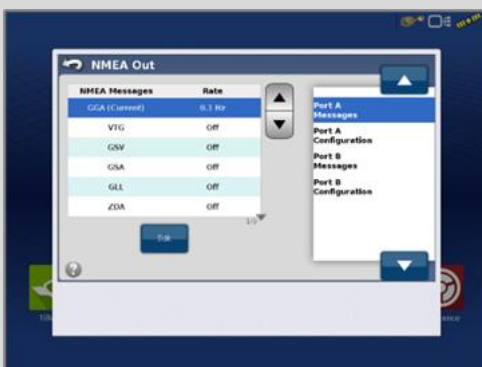
Select GLONASS RTK Initialization on the right & enable it. Make sure the Base Station Type is set to Trimble
** if GLONASS does not appear, skip to the next step*



8

Back out of this screen & select the NMEA Out icon

- Port A messages should match the screenshot below
- Port A Config> set Baud Rate to 38400



9

Back out of this screen, select precision settings & set to "RTK Only"
 Return to the run screen & confirm you have throughput & RTK fix

