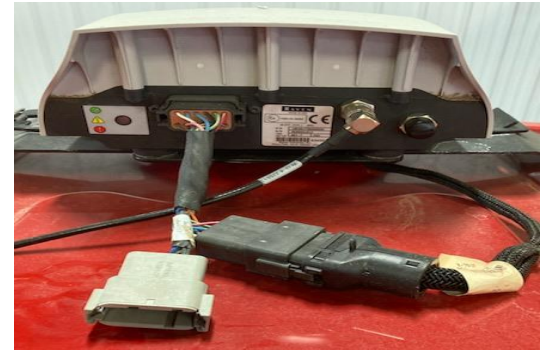


Cable Installation

- 1 Install the RS1 adapter between the factory cabling and the RS1, Then connect the Elevate cable to the RS1 adapter.



Mounting

1. Use 3 screws supplied with kit and attach Beacon 4 to tapered part of bracket. Don't overtighten.
2. Use supplied alcohol swabs to clean a small section of the tractor roof.
3. Peel back the mounting plate adhesive strips and press onto roof.
4. The bracket will then magnetically mount to base plate.



Note: Beacon 4 must be mounted vertical.

iOS App

- 2 Pair your Beacon 4.0 with the GR Tech NBV1 NTRIP Client iOS App. Once paired your iPad will ask to download directly from the Apple App Store. See our App QRC for set-up details.



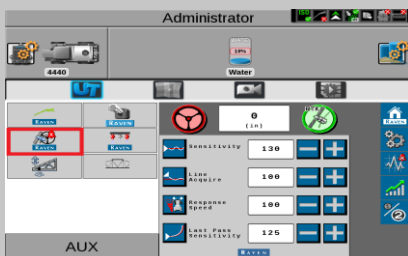
GRTech NBV1 NTRIP Cl...
Navigation

OPEN

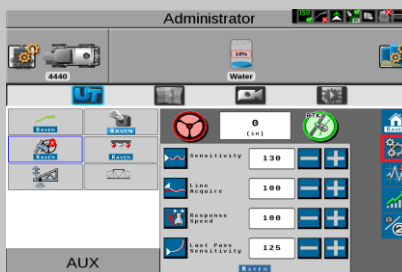


Receiver Set-up

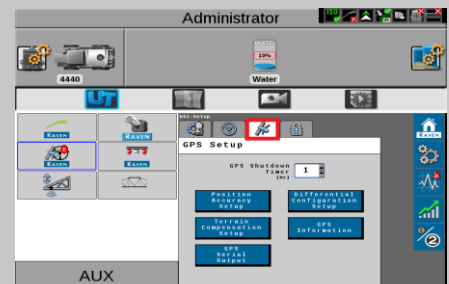
- 3 Once the display is on and the UT has found all the ISOBUS components select the RS1 Icon.



- 4 Select the setup icon.



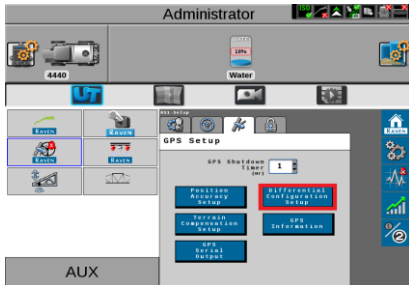
- 5 Select the GPS setup icon



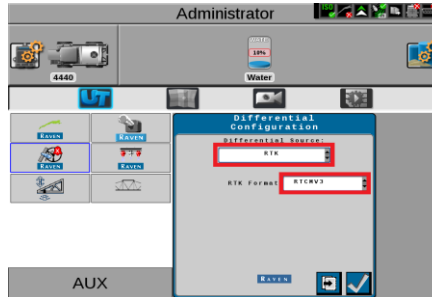
Continue installation on back page



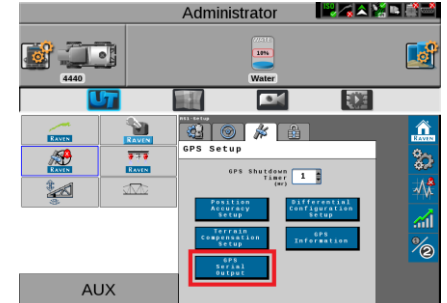
6 Select Differential Configuration setup



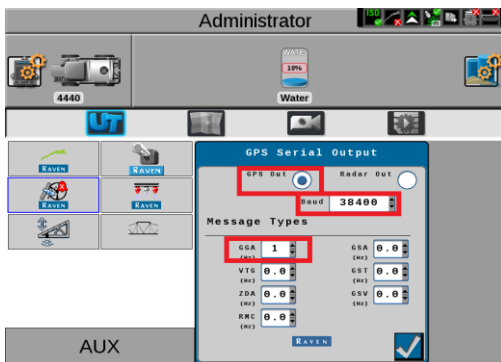
7 Set Differential source to RTK and RTK Format to RTCMV3, then select the checkmark.



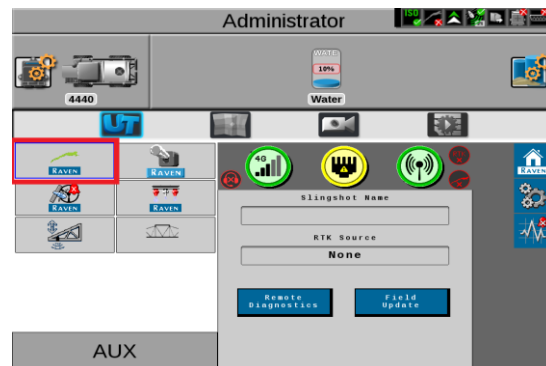
8 Select GPS serial output



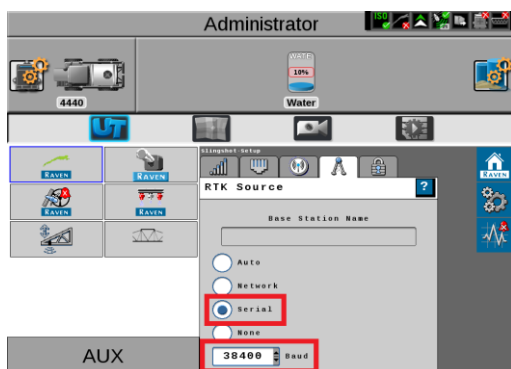
9 Select GPS out, Set Baud to 38400, ensure GGA is at 1 and all others are at 0.0, select the checkmark



10 Select slingshot from the UT, Then select the setup icon to the right.



11 Select RTK Source and set to serial and 38400 Baud



12 Return to the RS1 UT screen and confirm RTK

